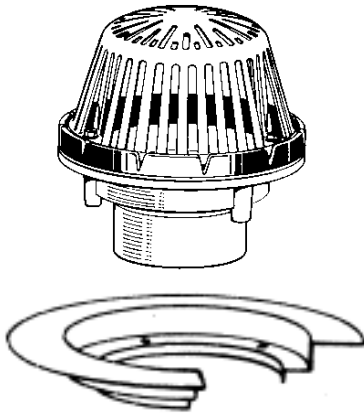
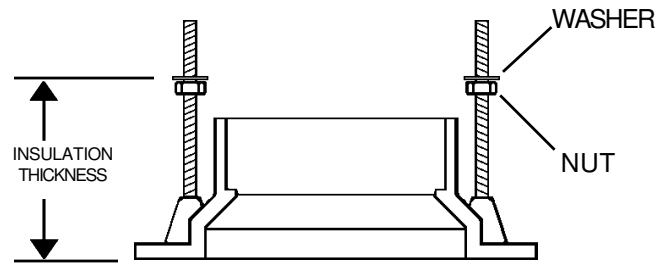


Installation Instructions - Extension Pan



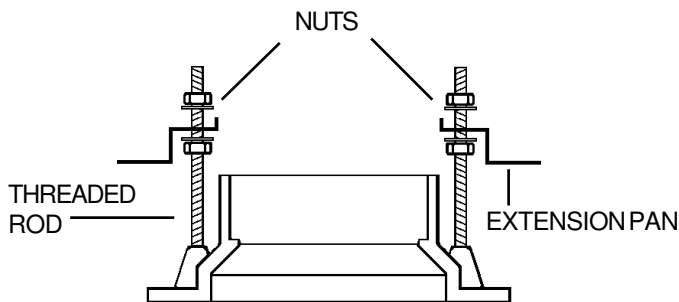
STEP 1

Ensure drains on jobsite are the appropriate size.



STEP 2

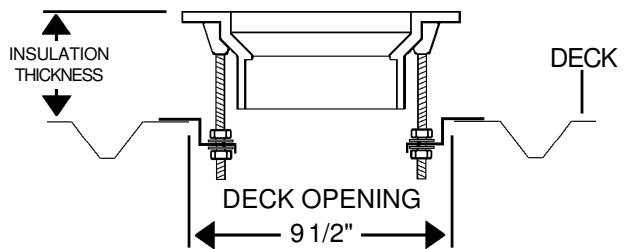
Invert roof drain on a solid surface. Install four threaded rods. Install one nut and washer onto each threaded rod and position to accommodate insulation thickness.



STEP 3

INSTALL EXTENSION PAN

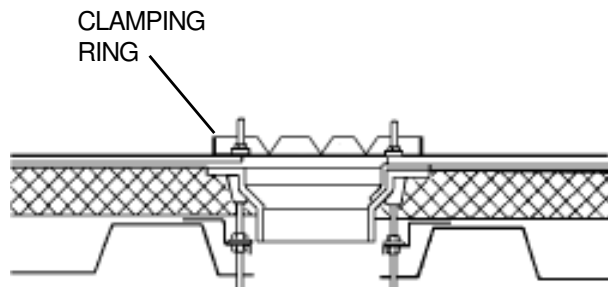
Invert Extension Pan and position onto threaded rods. Install one washer and one nut onto each threaded rod and tighten.



STEP 4

INSTALL IN DECK

Return the completed assembly to upright and normal position. Position assembly into pre-cut deck opening so that flange of extension pan is flush on deck surface. Tack weld or use fastener (not supplied) to secure completed assembly to deck. Verify drain flange is at correct height to accommodate insulation thickness. Adjust nuts if required and tighten.



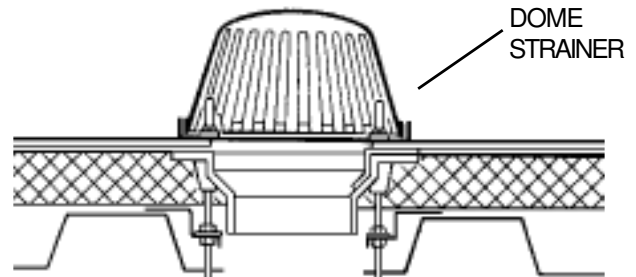
STEP 5

INSTALL CLAMPING COLLAR

Trim top of insulation to accommodate drain flange and butt insulation to drain body. Top of insulation should be flush with top of drain flange.

Install all membrane and flashings in accordance with roof membrane manufacturer's requirements.

Install threaded rods, clamping ring, washers, and nuts to securely compress the completed membrane and flashing.



STEP 6

INSTALL DOME STRAINER

Attach Dome strainer to Gravel Guard / Clamping Ring with the three bolts.