

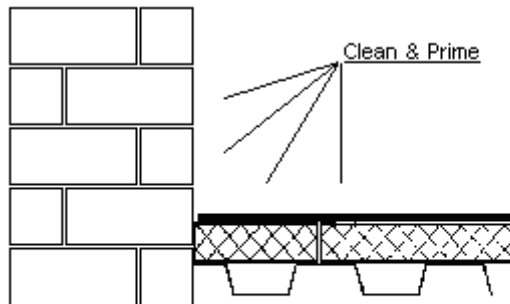
STEP 1

Determine which corner is appropriate. Clean and prime in accordance with roof manufacturer's recommendations.

Portals Plus manufactures Inside and Outside corners in both Neoprene and EPDM. These corners can be used for a wide variety of roofing membranes.

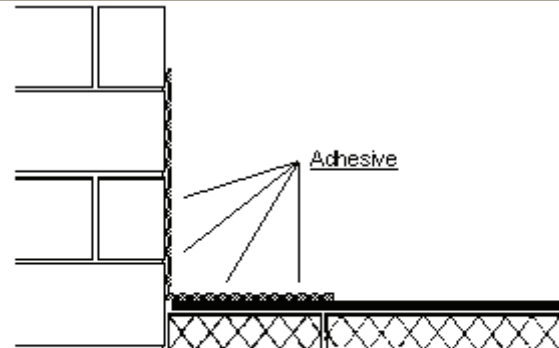
ALL CORNERS AVAILABLE IN BLACK OR WHITE.

The following instructions do not apply to TPO systems.



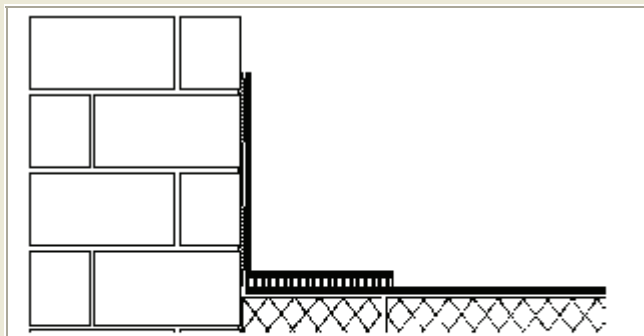
STEP 2

Insure that all substrate surfaces are cleaned and free of dirt and debris.



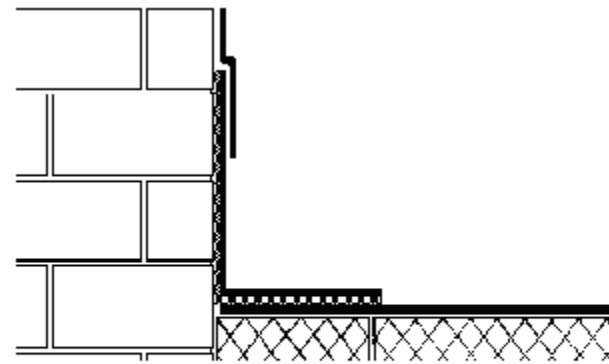
STEP 3

Apply Roofing Manufacturer's recommended adhesive (hot asphalt or glue) to all surfaces to be in contact with corner. Apply same to corner material.



STEP 4

Install corner. Care should be taken to ensure corner does not bridge or wrinkle during installation. Corner must completely conform to the substrate with which it is being bonded.



STEP 5

Finish installation per Roofing Manufacturers recommendations or requirements.

PORTALS PLUS 815 Kimberly Drive, Carol Stream, IL 60188

TEL: (800) 624-8642 FAX: (866) 466-9335

All information is subject to change without notice. Dimensions and specifications shown are within manufacturing tolerances.

© Copyright Commercial Products Group of Hart & Cooley, Inc., January, 2008. All Rights Reserved.