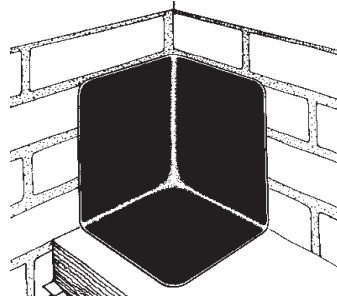
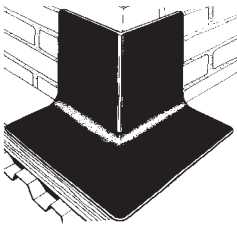
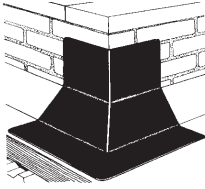




Premolded Corners

Technical Product Information

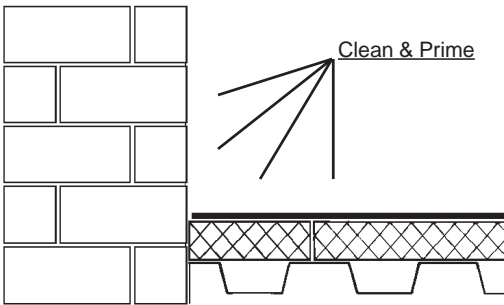
Installation Instructions



STEP 1

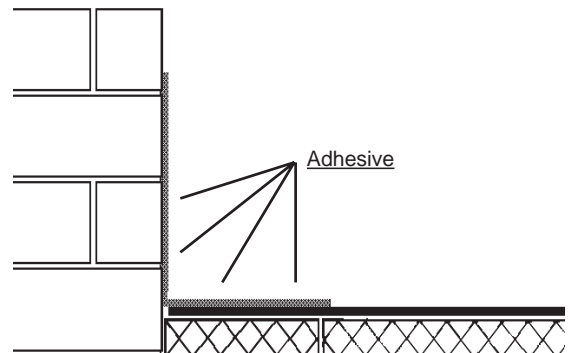
Determine which corner is appropriate. Clean and prime in accordance with roof manufacturer's recommendations.

Portals Plus manufactures Inside and Outside corners in Neoprene, EPDM, PVC, and TPO. These corners can be used for a wide variety of roofing membranes.



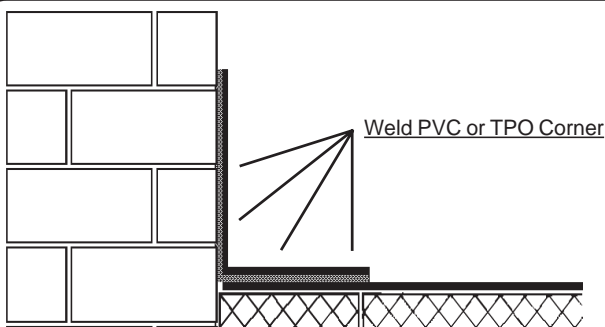
STEP 2

Insure that all substrate surfaces are cleaned and free of dirt and debris.



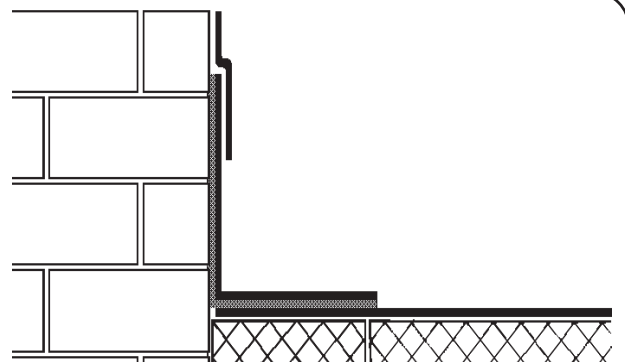
STEP 3- EPDM and Neoprene Corners only

Apply Roofing Manufacturer's recommended adhesive (hot asphalt or glue) to all surfaces to be in contact with corner. Apply same to corner material.



STEP 4

Install corner. Care should be taken to ensure corner does not bridge or wrinkle during installation. Corner must completely conform to the substrate with which it is being bonded.



STEP 5

Finish installation per Roofing Manufacturer's recommendations or requirements.